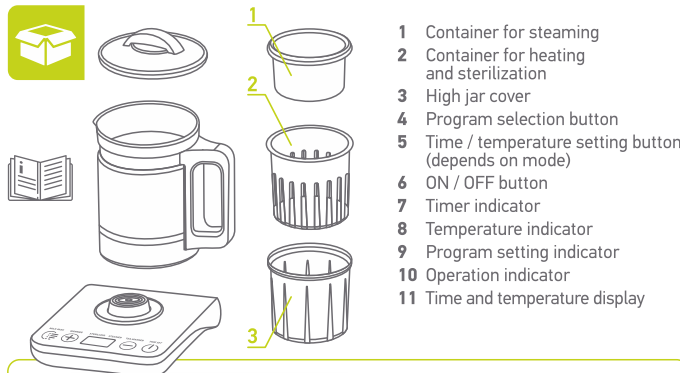
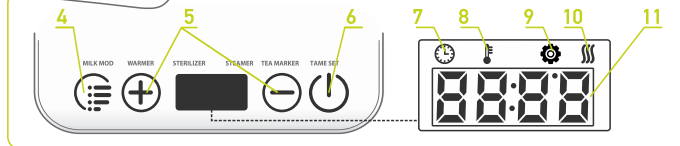
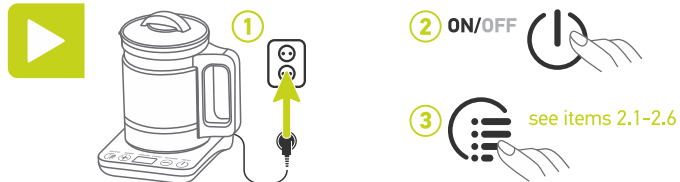
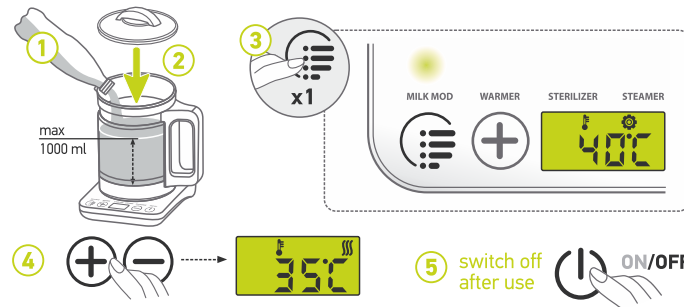
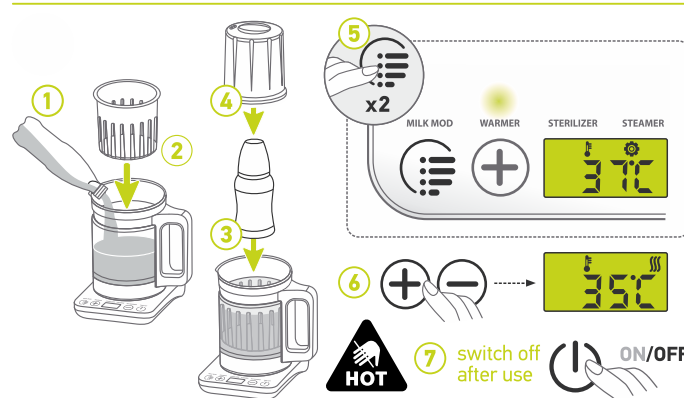
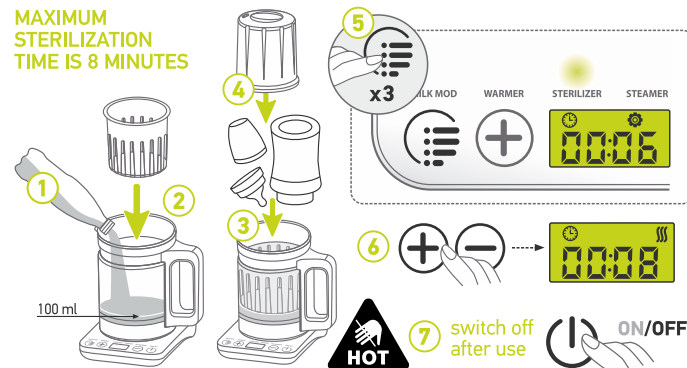
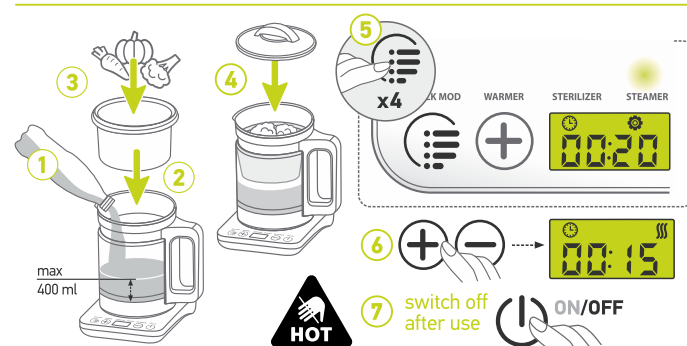
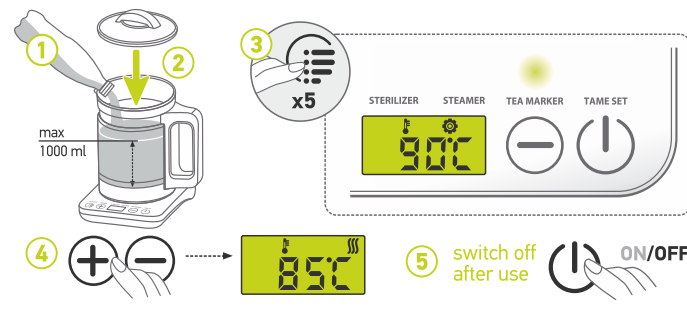


1

- 1 Container for steaming
- 2 Container for heating and sterilization
- 3 High jar cover
- 4 Program selection button
- 5 Time / temperature setting button (depends on mode)
- 6 ON / OFF button
- 7 Timer indicator
- 8 Temperature indicator
- 9 Program setting indicator
- 10 Operation indicator
- 11 Time and temperature display

**2**

- 2 ON/OFF
- 3 see items 2.1-2.6

2.1**MILK MODULATOR** boiling the water, then maintaining the set temperature**2.2****WARMER** milk reheating**2.3****STERILIZER** steam sterilization**2.4****STEAMER** steam cooking**2.5****TEA MAKER** boiling the water, then maintaining the set temperature**2.6****TIME SET** delayed appliance start for MILK MODULATOR / WARMER only